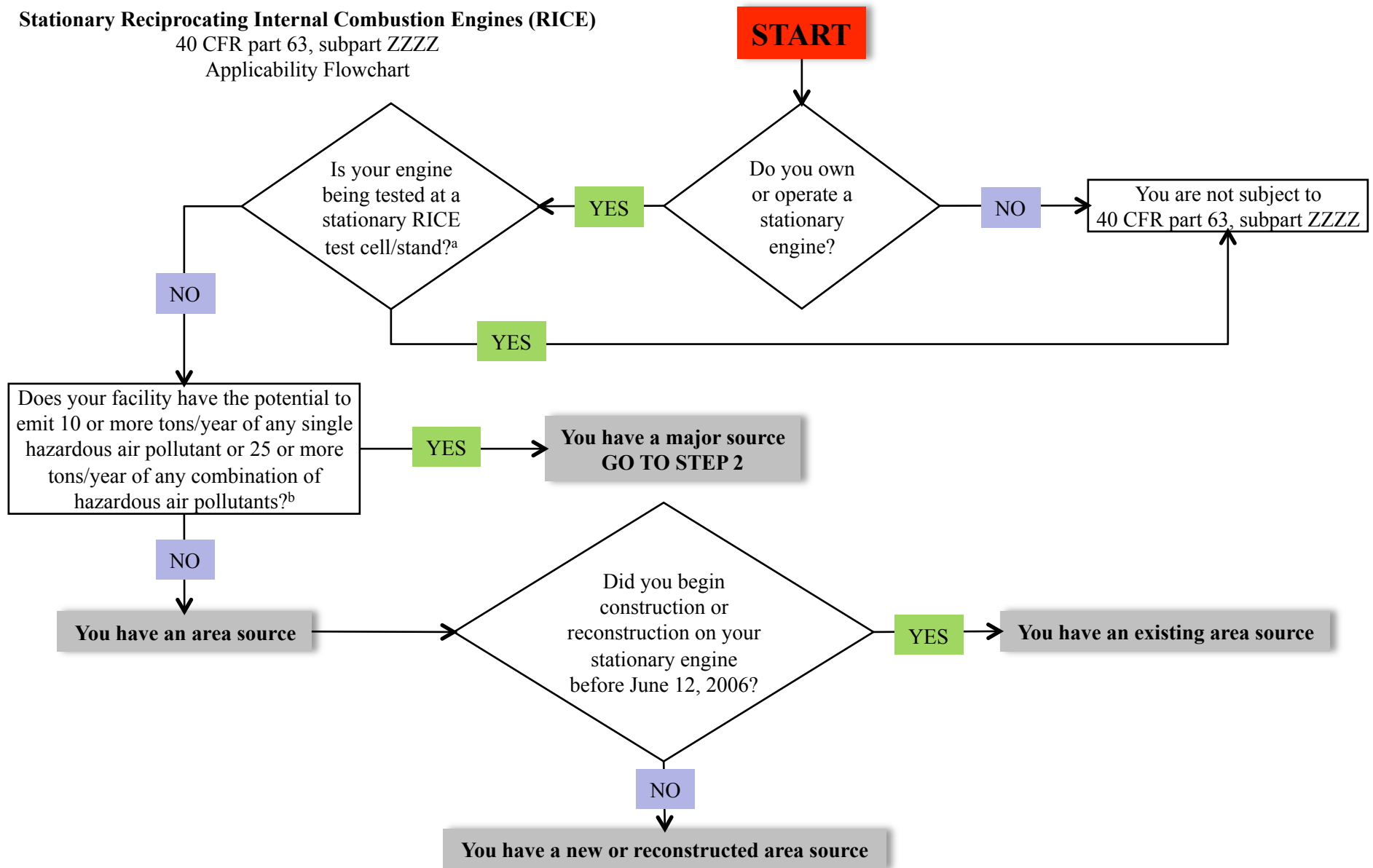


Stationary Reciprocating Internal Combustion Engines (RICE)
 40 CFR part 63, subpart ZZZZ
 Applicability Flowchart



^aAn engine test cell/stand is any apparatus used for testing uninstalled stationary or uninstalled mobile (motive) engines.

^bFor assistance in determining the potential to emit, please refer to <http://www.epa.gov/ttn/chief/ap42/index.html> or contact your EPA regional office or state permitting staff. To determine the potential to emit, you may use emission factors from <http://www.epa.gov/ttn/chief/ap42/ch03/index.html>, test data, or other published information.

Stationary Reciprocating Internal Combustion Engines (RICE)

40 CFR part 63, subpart ZZZZ

Applicability Flowchart

